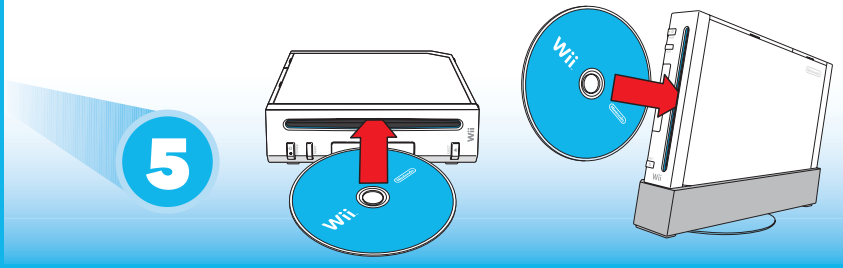


5 Playing a Wii or Nintendo GameCube Game Disc

Insert your Game Disc into the Game Disc slot on the front of the console. The Wii console will turn ON automatically. If your console is placed vertically, the disc label will face to the right. If your console is placed horizontally, the disc label will face upwards. See Pg. 24.

Wii discs and GameCube discs



Wii™

Wii QUICK SETUP

For successful setup, the Wii system requires an initial installation of specialised components, including the Sensor Bar, Wii Remote, and Wii console. This quick setup guide provides only brief instructions.

IMPORTANT: For detailed setup instructions of all components and important health and safety information, please carefully read the Wii Operations Manual System Setup.

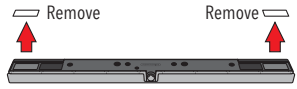
NOTE: Page numbers mentioned in this quick setup guide refer to the Wii Operations Manual System Setup.

IMPORTANT:

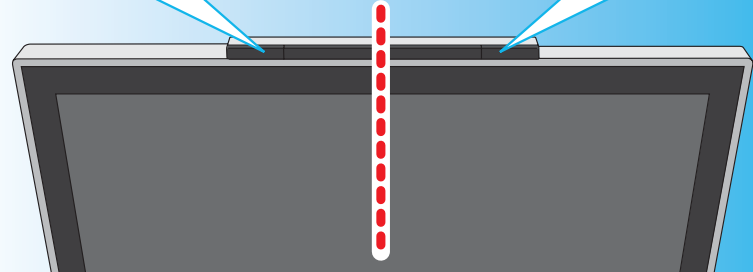
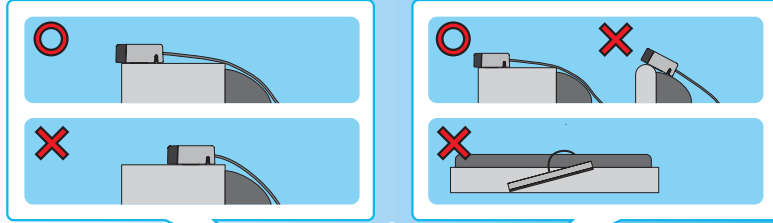
Through the use of your Wii console, you may accumulate Wii Points, Wii Shop Channel downloads, saved game data, photos, messages, etc. that are saved in the internal memory of your console. Some of this information may be personal and you may want to retain or protect it. Review the Wii Operations Manuals and visit www.nintendo.com.au or contact Nintendo Customer Service on **(03) 9730 9822 (9:00am to 5:00pm Monday to Friday [EST])** for troubleshooting and repair information if required.



1 Installing the Sensor Bar

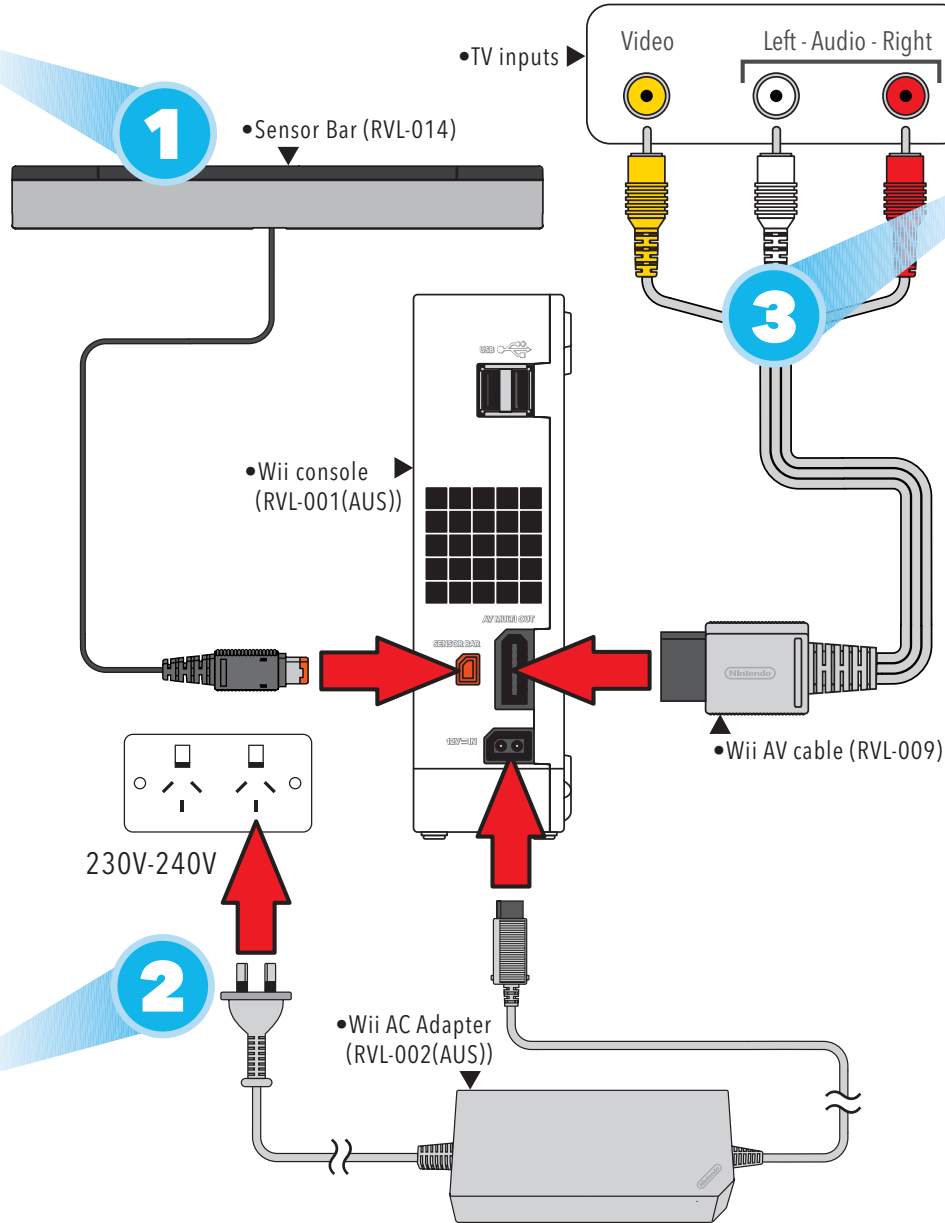


Remove the paper from the double stick tape on the bottom of the Sensor Bar. Install on your TV. See Pgs. 13-16.



2 Wii AC Adapter

Plug the Wii AC adapter into a standard 230-240 volt household electrical outlet after installing the Sensor Bar on the TV. See Pg. 17.



3 TV video/audio input

Set the correct "Input Select" setting for your TV, VCR or other equipment. See Pg. 12.

4 Synchronising Wii Remotes

The Wii Remote included with your system should already be synchronised to your console. However, all additional Wii Remotes you use with your system also need to be synced in order to function properly. Press the Power button to turn on the Wii console. Then press the SYNC. buttons as shown. See Pg. 22.

